

Fullerton School District Local Control Accountability Plan

2025-2026 LCAP Overview for Families

DRAFT

FULLERTON
SCHOOL
DISTRICT



Fullerton School District Board of Trustees

Beverly Berryman, President

Ruthi Hanchett, Vice President

Aaruni Thakur, Clerk

James Cho, Member

Vanessa Estrella, Member

The mission of the Fullerton School District is to work collaboratively with the community to provide an innovative, high-quality educational program for all students in a safe learning environment. Our motto, “Great Schools - Successful Kids” exemplifies the belief that all students will achieve academic excellence, acquire interpersonal skills, and develop technological expertise to contribute as productive citizens in a democratic society.

1401 W. Valencia Drive, Fullerton, CA, 92833
714-447-7400
www.fullertonsd.org

What is the LCAP?

The Local Control Accountability Plan (LCAP) is a tool for FSD to set **GOALS**, plan **ACTIONS**, and leverage **RESOURCES** to improve **STUDENT OUTCOMES** over a 3 year period.

It includes:

- Budget Overview for Parents (BOP)
- Annual Updates and Expenditures
- Educational Partner Engagement
- Plan Summary/Narrative
- Goals, Actions, Services, and Increased Services
- Expenditure Tables
- LCAP Instructions

The LCAP and additional documentation can be found on the district website:
www.fullertonsd.org

District Overview



21 Schools

K-6: 15 sites
 K-8: 2 sites
 Junior Highs: 3 sites
 MyConnect Academy
 (Homeschool): 1 site



11,439

Students
 (2024 CA
 Dashboard)



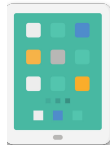
1,614

Employees



11

Gold Ribbon
 Schools



1:1

Student
 Devices



20

PBIS Platinum
 Schools

Positive Behavior Interventions & Supports

Student Groups

Foster Youth	0.6%
Homeless Students	1%
Students with Disabilities	13%
Socioeconomically Disadvantaged	52.4%
English Learners	18.9%

Student Race/Ethnicity

American Indian	0.3%
Asian	23.7%
Filipino	2.4%
Pacific Islander	0.2%
Hispanic	51.4%
Two or More Races	5.3%
White	15.4%
African American	1.3%

What are the goals for FSD's LCAP?

There are 4 goals in the 2025-2026 LCAP, along with actions and services:

Goal 1

Student Achievement

All students will demonstrate proficiency or growth toward proficiency in ELA and math.

Professional Development
High Quality Staff and Supports
Advanced Coursework
College and Career Readiness
Art Programs
Progress Monitoring

Standards-Aligned Curriculum
English Learner Support
Academic Intervention
Enrichment
Strategic Use of Data
Special Education Student Support

Response to Intervention
Gifted and Talented Education
Preschool and Universal TK
Dual Immersion Programs
Culturally Responsive Instruction
Expanded Learning

Metrics: District assessments, ELPAC, CAASPP results, CA Dashboard EL Progress Indicator, Williams Audit, LCAP survey, Preschool Early Development Index

Goal 2

Technology/Digital Literacy

FSD will provide access to high quality digital tools, infrastructure, resources, personalized learning technology and professional learning so that all students have opportunities to access engaging online instructional resources and can demonstrate digital and informational literacy skills required for college and career success.

Infrastructure for Instructional Technology & Internet Access
1:1 iPad Program (Grades 3-8)
Professional Development

Parent and Student Training
Student Agency Opportunities
Strategic Support to Low-Income, Homeless, and Foster Youth

Digital Wellness
Technology, Library, & Media Assistants
Project-Based Learning
Digital Resources & Support

Metrics: Percentage of students with access to technology and digital resources, percentage of staff teaching informational literacy and Internet safety and receiving professional development, number of schools in which personnel have been trained in AI tech integration

Goal 3

Safe & Secure Environment

All FSD departments and school sites will work to provide a safe and secure environment that promotes the physical, social and emotional health and well-being of all staff and students.

Security Personnel
Safety Training & Preparedness
Physical, Social, Emotional Health Supports
Social Emotional Learning Curriculum
Restorative Practices

Bullying/Digital Citizenship Curriculum
Attendance Roadmap and Site Teams
Wrap-Around Services & Training
Nurses & Health Assistants
Mentoring and Check-ins

Mental Health Counseling Support
Foster Youth & Homeless Services
Facility Upgrades
Positive Climate Building School Events

Metrics: Williams facilities audits, attendance rates, chronic absenteeism rates, suspension rates, number of students identified at risk, engagement/climate surveys, teacher surveys

Goal 4

Parent & Community Engagement

Promote engagement of all families through open, effective communication and by providing families meaningful opportunities to support and celebrate student learning and cultures.

Public Information Officer
Culture of Inclusion
Parent Engagement in Student Success
Champions of Learning/PTA
Parent Trainings: SEL, PBIS, MTSS

Parent Advisory Groups
Multilingual Taskforce
Culturally Responsive Advisory Taskforce
FSD Foundations
Wellness Coordinator

Pre-K/TK/Kinder Parent Orientation
Community Partnerships
Student Showcase Celebrations
School Personnel Support
Translation Support

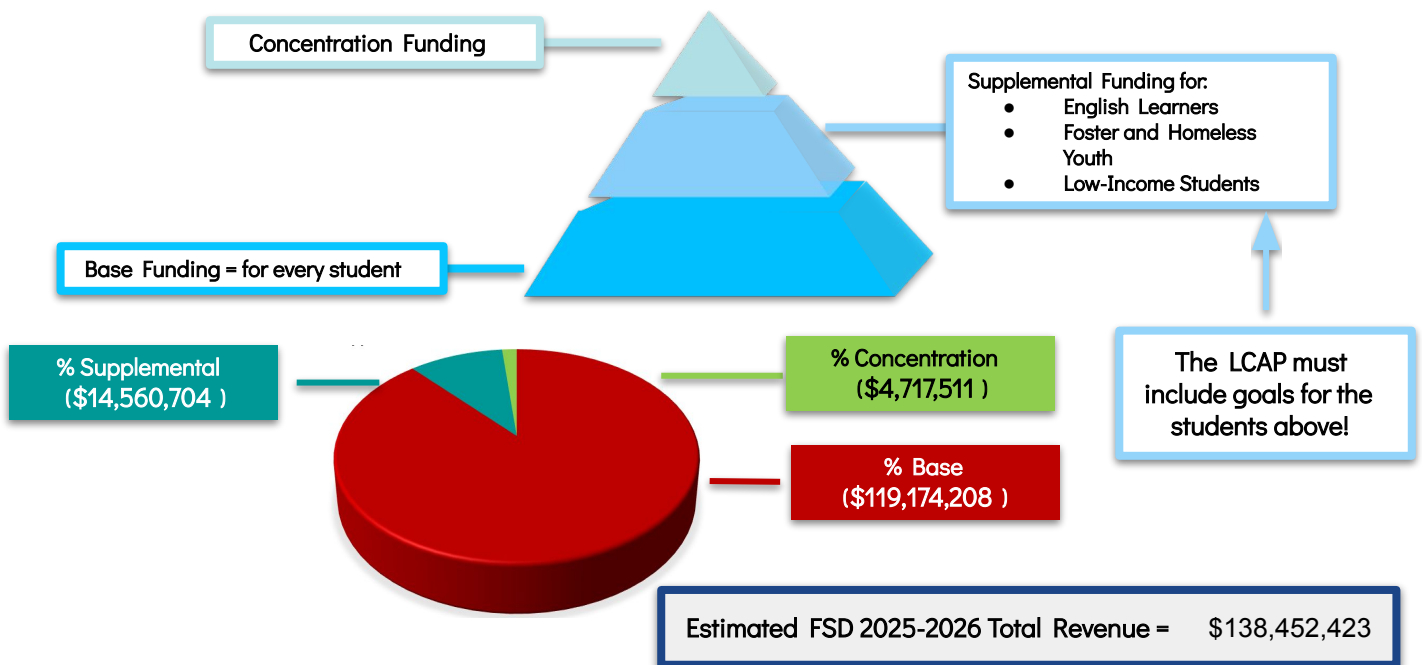
Metrics: Positive ratings on district and school parent engagement and school climate surveys, number of workshops and trainings offered, attendance at Champions for Children Conference, number of parents taking the LCAP survey

How does FSD involve educational partners?

Every year, the District convenes the LCAP Advisory Committee to actively involve all educational partners in the development of the LCAP. Representatives from parent advisory groups (DELAC, PTA), Fullerton Elementary School Management Association, employee bargaining units (FETA, CSEA), educational foundations (the Fullerton Educational Foundation, the All the Arts Foundation), and district staff give insights about instructional programs in relation to FSD Board goals and California's eight state priorities.

The committee meets four times throughout the year to review district metrics and progress towards each goal and makes recommendations for the following school year.

How is each school district in California funded?



The LCAP must also meet the 8 required state priorities below:

Conditions of Learning

Student access to credential teachers, standards-aligned curriculum, and safe facilities.

Effective implementation of the CA State Standards for all students.

Student access to a broad course of study.

Pupil Outcomes

Improve student academic achievement, English proficiency, and college/career preparedness.

Measure other student outcomes related to required areas of study.

Engagement

Efforts to seek parent and community involvement in the decision-making process and educational programs.

Efforts to increase attendance rates and reduce chronic absenteeism and suspensions.

Highlight school climate and safety.